

DRAGGED THRU TIME

**GOLDIE & BEBE'S
EXTRAVAGANT ADVENTURE**



A Friends of George's Production
Evergreen Theatre
April 4,5,6 & 10,11,12



SUNDAY BEER BUST SPECIALS til 8pm

MARTINI MONDAYS ... All martinis are **2 for the Price of 1** from 5p-7p. **PLUS** Free Pool every Monday!

MARGARITA TUESDAYS ... All margaritas are **2 for the Price of 1** from 5p-7p. **PLUS** \$2 tacos, \$5 nachos, and \$3 Tecate all day!

WHISKEY WEDNESDAYS ... Whiskey drinks are **2 for the Price of 1** from 5p-7p. **PLUS** Papa Bear Trivia at 7pm

TREAT YOURSELF THURSDAYS ... Classic Cocktails are **2 for the Price of 1** from 5p-7p. **PLUS** indulge in a massage by Ben from Coyote Soul Massage in the west patio from 9p-11p

FUNTIME FRIDAYS ... Select shots are **2 for the Price of 1** **PLUS** \$3 local craft can beer is \$3 from 5p-7p

SUPER SATURDAYS ... Well drinks are **2 for the Price of 1** **PLUS** \$3 local craft can beer is \$3 from 5p-7p

1382 POPLAR AVE. MEMPHIS, TN 38104 • 901.272.7600

MON-SAT 5P-3A • SUN 3P-3A

thepumpingstationmemphis.com
CHECK OUT OUR CURRENT EVENTS
FOLLOW US FOR UPDATES



* The Pumping Station is a 21+ only bar and smoking is allowed only in the Backdoor Lounge.

Friends of George's Presents

DRAGGED THRU TIME ***GOLDIE & BEBE'S EXTRAVAGANT ADVENTURE***

April 4,5,6 & 10,11,12, 2025
Evergreen Theatre

starring

Micah Winter-Cole Burton Bridges Wade Murphy
Amy Gregory Rick Bartl Fantasia Bordeaux
David Winter-Gutierrez Sandy Kozik Cary Vaughn
Chad Engelbert Bridgette Wallace Dustin Perry
Jennifer Mury-Rodley Aubrey Wallace
Allysun Wunderland Tom Clifton

costumes/wigs
Friends of George's

lighting design
Dylan Allemang

scenic design
Andrew Glenn

sound design
Ty Phillips

props
Jane Parks

choreography
Laquentus "Q" Jones

costume consultant
Kathleen Kovarik

stage management
J-Lavender

production manager
Vanessa Rodley

written by
Rick Bartl, Burton Bridges, Jane Pratt Parks, Micah Winter-Cole

Directed By
Irene Crist

benefiting
Theatreworks At The Evergreen

There will be a 15 minute intermission.
Please silence your phones.

Creating Spaces for Success



Bloom Lounge Chair
appearing in Carnegie Bliss Color42
Seat Upholstery by Kimball International



www.westinteriors.com
Chris Miller
901-483-0989

CAST

<i>Goldie Dee Collins</i>	Micah Winter-Cole
<i>BeBe Bliss</i>	Burton Bridges
<i>Cuhran Barre</i>	Wade Murphy
<i>Henchperson</i>	Amy Gregory
<i>Fauna, Carol Channing, Sally Jessy</i>	Rick Bartl
<i>Producer, Madame DuClaque, Betsy Ross</i>	Fantasia Bordeaux
<i>Bill, Jesus, David Bowie,</i>	David Winter-Gutierrez
<i>Benjamin Franklin</i>	
<i>Gladstone, Roman Wife, Liza Minnelli,</i>	Sandy Kozik
<i>Mob</i>	
<i>Stoney Curtis, Judas, Samuel Adams</i>	Cary Vaughn
<i>Jim, Roman Man, Paul Revere</i>	Chad Engelbert
<i>Justine, Vivian, Heidi</i>	Bridgette Wallace
<i>Chandley Kubrick, Guard, Judge</i>	Dustin Perry
<i>Grip, Judge</i>	Jennifer Murry-Rodley
<i>Bartender, Judge</i>	Aubrey Ombre
<i>Carol Anne, Allysun Wunderland</i>	Allysun Wunderland
<i>Marie Antoinette</i>	Tom Clifton
<i>Harry Loose Gates</i>	Curtis C. Jackson

Ensemble: Rick Bartl, Fantasia Bordeaux, Chad Engelbert, Sandy Kozik, Jennifer Murry-Rodley, Aubrey Ombre, Dustin Perry, Cary Vaughn, Bridgette Wallace, David Winter-Gutierrez, Allysun Wunderland

Theatretworks Sponsors
ArtsMemphis
The Jeniam Foundation
The Marston Group
Thomas Briggs Foundation
The TN Arts Commission

Chuck Dewberry's

STAGE DOOR SALON

- **KERATIN SMOOTHING**
- **GOLDWELL COLOR**
- **EXTENSIONS**
- **BROW WAXING**

Chuck Dewberry
(901) 690-0857

Bill Zachary
(901) 488-4673



Find us on Facebook @
[facebook.com/stagedoorsalon](https://www.facebook.com/stagedoorsalon)



Marry Me, Robin

MORE THAN WEDDINGS

Mobile notary service allows you to make it legal, quickly and reliably. In the event of your unfortunate and sudden disappearance in time and space, notarized estate plans will make it easier on your loved ones. Probate isn't cute. Be excellent to each other. Party on.

Notary services include:

Real Estate Documents

Medical and Financial Powers of Attorney

Wills and Trusts

Marriage and Divorce Documents

Prenuptial or Postnuptial Agreements

MARRYMEROBIN.COM

CREW

Director	Irene Crist
Stage Manager	J-Lavender
Scenic Design	Andrew Glenn
Lighting Design	Dylan Allemang
Choreography	Laquentus "Q" Jones
Sound Design	Ty Phillips
Properties	Jane Pratt Parks
Costume Consultant	Kathleen Kovarik
Writers	Rick Bartl, Burton Bridges, Jane Pratt Parks, Micah Winter-Cole
Wig, Hair & Makeup	Friends of George's Company
Make Up Assistance	Joseph Grant, Gould's Academny
Backstage Dresser	Alex Carpenter, Scott Haynes, Jane Parks, Josh Wallis
Set Construction	Andrew Glenn
Lighting Operator	Robert Packwood
Spotlight Operator	Elizabeth Acree
House Manager	Vanessa Rodley
Front of House	Mar Newell, Evelyne Malone, Adam Hill
	Jaime Roberts, Jenna Lee Dunn, Brian Budchangan
Production Management	Rick Bartl, Burton Bridges
Filmography & Video Editing	Savannah Bearden
Graphic Design & Marketing	New Urban Media
Photography	Kevin Reed
Sponsorships & Sales	Diane Thornton, Katy Leopard, Ty Phillips

SPECIAL THANK YOU

Savannah Bearden, Melissa Stewart, The Donati Law Firm, Tracy Love, Daniel Valdez, Kacky Walton, TheatreWorks, The Mail Center, Playhouse On The Square, Theatre Memphis, The University of Memphis Theatre & Dance

PAPA BEAR TRIVIA

COME TEST YOUR TRIVIA SKILLS!

WEDNESDAYS 7PM
PUMPING STATION
1382 Poplar Ave

THURSDAYS 7PM
DRUS BAR
1474 Madison Ave

Ask about private events for your business
papabeartrivia.com
sales@papabeartrivia.com



Join Papa Bear Trivia to flex your trivia knowledge against other teams and win prizes.

Papa Bear Trivia has been delivering weekly pub trivia at two locations in Memphis for nearly three years!

COMPANY PLAYERS



Goldie (a.k.a. Micah Winter-Cole) has been performing in some capacity since she/he/they was five years old and could utilize Dad's cowboy boots as an imagined stiletto. Choirs, musicals, operas, drag bars, MC'ing large events, MC'ing dreadfully small events.. Goldie/Micah has done it all. Yet, truthfully, their big love has and always will be writing. It was a unique, and truly gratifying experience, writing this show with dear friends. Whatever name they go by in the future, writing is something they hope to do more and more of. Goldie would like to thank Irene for her guidance, Bebe for her dear friendship and brain, and Jeremy Winter-Cole for the pep talks and constant therapy.



David Winter Gutierrez is a long time fan and supporter of the Queens and Kings that make Friends of George's such a fantastic theatrical experience. Over the years, David has contributed both on and off stage. His favorite roles have included: backstage boot zipper, confetti vacuumer, Goldie wrangler, Prince Charming numbers 1, 2, and 3, Winston (the butler), and Jesus Christ. He looks forward to continuing his partnership with this lovely bunch of artists in this, his 10th production with FOG.

Rick Bartl (a.k.a. Phyllis Feathers) is delighted to be back on the Evergreen stage with this talented and joyful cast! As co-writer and cast member for this production oRick has found an endless sense of happiness and pride in what we do. Rick has appears in a number of FOG productions, has stage managed many shows around town in his younger years, and is a recent Ostrander Award winner for Best Ensemble, Out of the Woods: FOG Fairy Tales. Special thanks to Irene for making us look great, Burton/Micah/Jane for sharing your creative spirit, and to this amazing group of friends (new and old ... Sandy, I'm talking to you) for making every minute a joy!!



Sandy Kozik (a.k.a. Bela D'Ball) is a retiree living his best life getting to play theatre with his Friends of George's family. He spent more than 20 years in non-profit arts education. In another life, he traveled with a traveling tented circus as a clown and is a graduate of RBB&B Clown College. He still freelances as a teaching artist, holiday decorator, and as a judge for the High School Musical Theatre Awards program at the Orpheum. He and his husband, George Howell, share a home with a cat and two dogs.



Jennifer Murry-Rodley is grateful to be returning to the stage with her beloved fog family in this super fun journey through time. She usually leads her team as Stage Manager but is turning in her head set for a pair of dancing shoes and a new set of wigs. She has proudly served on the Friends of George's board for nine years and says that her work with FOG is a creative outlet and she hopes to continue to fight for the right for everyone to be able to express that creativity freely.



Fantasia Bordeaux is a graduate of Christian Brothers University. She is an LGBTQ+ Advocate and has been a Memphis entertainer for over 25yrs. She is a former Miss Black Continental and Miss Gay Memphis. She believes in being a positive role model and a voice for change. She has been in multiple FOG productions and played many zany characters. Her roles in Dragged Thru Time: Goldie and BeBe's Extravagant Adventure add a wacky, wicked, and wonderful twist to their time traveling adventures.

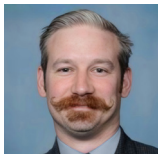


Allysun Wunderland, a dedicated resident member and long-time FOG board member, has been an integral part of every production since the company's inception. Known for her versatility and comedic timing, she has captivated audiences with her performances, including her notable appearances in the acclaimed Break-Up Show in 2023 and 2025.



Burton Bridges (a.k.a. BeBe Bliss) (he/him) can't believe this show is finally born after months of musings and many writing sessions. Burton serves on the Friends of George's board and has performed in several of their productions, most recently as Dragatha Christie in Death Drop at Hotel Le'George. Heartfelt thanks to the cast and crew for bringing this work to life. Special thanks to Irene for bringing cohesion, to Rick, Jane, and Micah for their collective brain trust, and to Goldie and the gals for throwing a wig on BeBe years ago.

CAST



Dustin Perry dabbled in improv for eight years as well as community theater, and he now uses those skills teaching high school math. A long time fan of the comedic stylings of Friends of George's, he is very excited to be returning to the stage for his second F.O.G show.



Aubrey Nicole Wallace (a.k.a. Aubrey Ombre) is your Miss Gay Memphis and I'm a former Miss Mid-South Pride. She's been an Entertainer for 15 years and an activist for 19 years. In her spare time she loves hanging with friends, watching good movies just get in touch with her creative side.



Cary made his Memphis stage debut in Circuit Playhouse's Zombie Prom (2001). Since then, he has performed in dozens of plays and musicals for multiple theatre companies in the area. Favorite roles include Sam (Mamma Mia!), Marvin (Falsettos), Lancelot et. al. (Spamalot), Kyle - the UPS Guy (Legally Blonde: The Musical), and Mr. Greenfelt et. al. (Debbie Does Dallas: The Musical). When he is not in rehearsal, he covers Arts & Entertainment for Focus magazine and is passionate about hiking, horror novels, health & fitness, and posting shirtless selfies on Instagram.



Actor, Magician, Narrator. Sometimes all at once! I would like to give a sincere thank you to all of the Friends of George's for allowing me a second opportunity to come play on stage with you. It is my absolute honor to be able to offer support. Like a corset on a Drag Queen.



Bridgette Wallace is a Memphis native and proud to be part of a Friends of George's production. She enjoys Motörhead karaoke, cats, and gardening. Having acting experience from childhood, they're excited to dust off their acting shoes and return to the stage for such a fun and exciting show.



Tom Clifton hasn't been onstage in two two decades but he's delighted to be back for this saucy cameo! Past shows include Corpus Christi, two runs of Clue: The Musical, two runs of Pageant, Falsettos, Four Baboons Adoring the Sun, as well as multiple operas. As owner of T Clifton Art, this show offers him an opportunity to step out of the art business world, and into a frenetically farcical fantasy!



Wade Murphy is thrilled to join Friends of George's for Dragged Thru Time and thoroughly enjoys getting to play the villain and torture Goldie and Bebe. He's also a writer and performer in The Charm Offensive Collective, which produces music and sketches on Instagram and YouTube. You can see him next in the Emerald Theater Company's production of Clark Gable Slept Here in June.



Amy Gregory is thrilled to make her stage debut with Friends of George's. She can be found singing with the Grace St Luke's choir and at various karaoke nights around town, as well as beautifying the good people of midtown at Madison Salon. She also performs in video projects with the Charm Offensive Collective on Instagram and YouTube.

PRODUCTION TEAM



Irene Crist has directed and/or acted in just about every theater in the Midsouth area. For decades, beginning in 1978, her theater home was Playhouse on the Square. Last year, she was delighted to join the Friends of George's family with their Out in the Woods FOG Fairy Tales. She fell in love with this crazy beautiful group of ladies and gents and is delighted to be back. Irene is an award winning actor and director and a recipient of the Eugart Yerian Lifetime Achievement Award, as presented by the Ostrander Memphis Theater Awards. This production is made of love, friendship and lots of sass. I hope you are able to take a little of all three home with you.



Laquentus "Q" Jones, a native of Memphis, is a passionate and dedicated professional line dance instructor with three years of experience. He brings energy, expertise, and a deep love for dance to every class he teaches. Laquentus offers both private and public classes across the city, helping individuals of all skill levels develop confidence and rhythm on the dance floor. Through his engaging instruction and commitment to the art of line dancing, Laquentus fosters a welcoming and inclusive environment where students can learn, have fun, and connect through movement. Whether leading a group session or providing personalized coaching, he continues

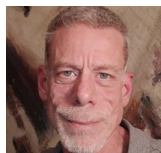
to inspire and elevate the Memphis dance community.



J Lavender (Stage Manager) is excited to be back Stage Managing another Friends of George's production. They have enjoyed being on the team of many theatrical productions across the mid-south. Friends of George's Out in the Woods: FOG Fairy Tales was nominated for Best Production Ostrander under her stage management. Other recent credits include assisting the production of LoneTreeLive's ABiteOfMemphis, Quark Theatre's Through The Looking Screen.



Dylan has been a dedicated and determined lighting designer for nearly a decade. After working along side rememberable acts such as Wayne Brady, Sugar Ray, and Styx, (to name a few,) he fell in love with the industry and began his own venture, Sublime Light. He is delighted to be joining his second Friends of George's production, and hopes for many more to come.



Robert Packwood (Lighting Technician) is a retired teacher who came to FOG in 2024. He started out volunteering to help build sets and as a stage hand for Hotel LeGeorge and again for Behind the Curtains. Robert is excited to be joining the cast and crew for a third time as he helps light the stage for yet another magnificent FOG production. Robert would like to thank his partner of 34 years, Jeff, for his love and support.



Ty Phillips (Sound Design) current Board President for Friends of George's, has been involved in theatre in some form for most of his life. He studied film at the North Carolina School of the Arts and began working with Friends of George's in 2010 as part of the George's Reunion at Minglewood Hall, joining the board shortly thereafter. While he began his theatre journey as an actor onstage, Ty discovered his true passion lies in the creative work behind the scenes. He was honored to have been the recipient of Ostrander Awards for Sound Design and Best Ensemble for FOG's production of "Out In The Woods." In addition to his sound design

contributions, he has written several original scripts performed by George's—and has a couple more simmering on the stove for future shows.



Andrew Glenn (Set Design) has over 15 years of carpentry experience. He got his start as a technical director 10 years ago, at The Evergreen, with Three Penny Theatre. In 2024, he built sets for Lone Tree Live, Tennessee Shakespeare Company, Friends of George's, Opera Memphis, and University of Memphis.

THE TIMELINE

ACT I:

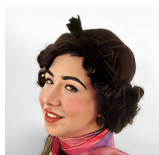
"Cave Sweet Cave"	12,000 B.C.
"One Giant Leap, Two High Heels"	1969
"Sassy Suppertime"	33 A.D.
"Carpe Fuhgeddaboutit"	LXXIX
"Let Them Eat Shade"	1790

ACT II:

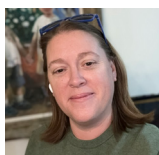
"Saturday Night Sequins"	1978
"Oh, the Humidity"	1937
"Revolu-TEA-neary Realness"	1773
"You've Got Male"	1994
"Star Blah: The Beige Generation"	2225



Jane Parks (Prop Designer). Crafting her way through time and space as the Prop Designer of *Dragged Thru Time*, Jane is active in the community and a tireless and proud ally. She serves as a board member of Friends of George's, and when not crafting or helping to write the next Friends of George's production, she lives in Midtown with her husband and her brand new hot glue gun.



Kathleen Kovarik has worked professionally in the industry for over a decade for theaters in Ohio, Colorado, Florida, Utah, and Tennessee. She is both a Costume Designer and Technician with her MFA in Costume Design from Kent State University. Currently, she is the Costume Shop Manager at the University of Memphis. She is thrilled to be able to help out this production just in time!

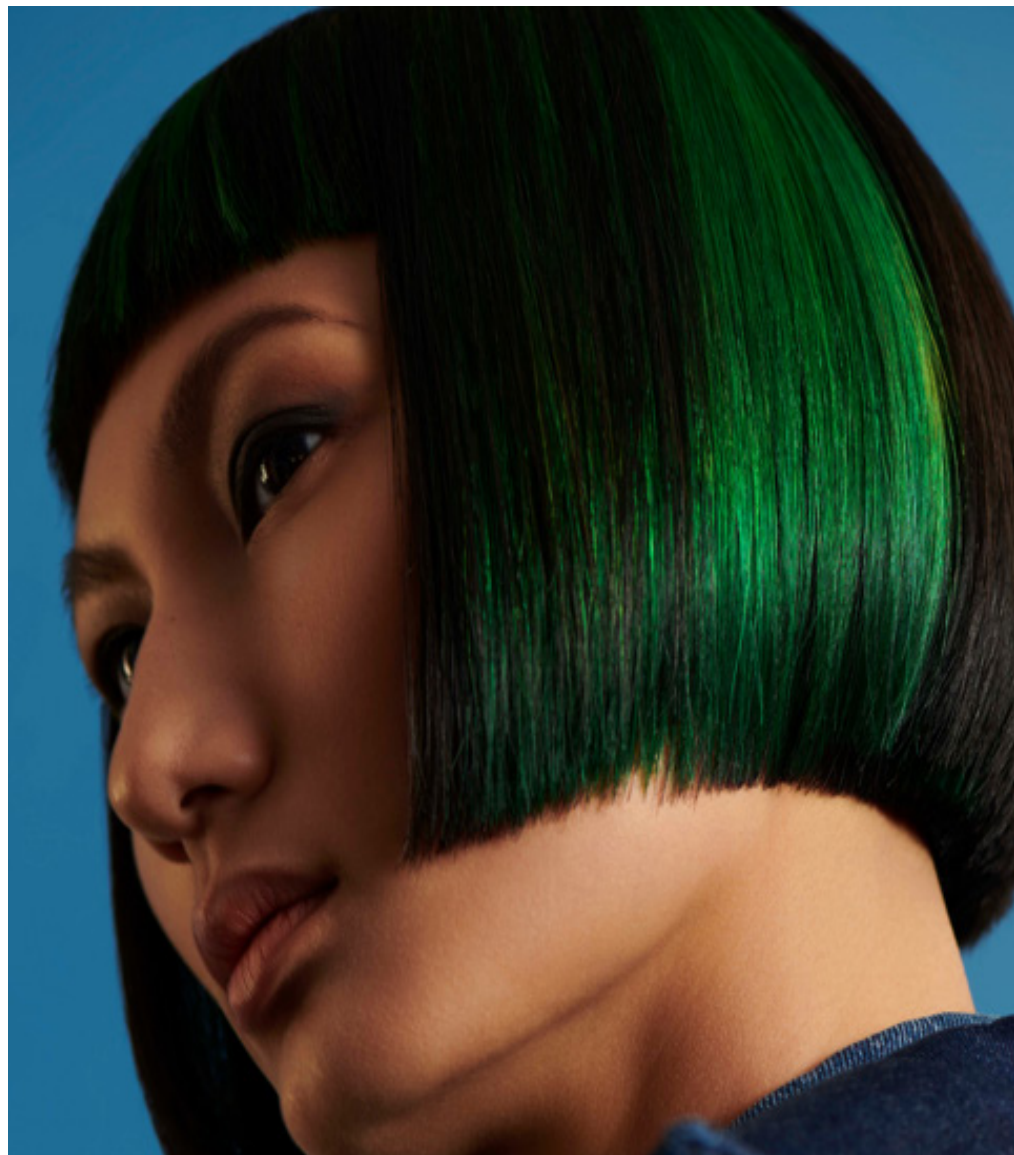


Vanessa Rodley (House Manager), Vanessa's journey with Friends of George (FOG) began in 2010, inspired by her mother-in-law and founding member, Angel Murry. Within a year, she transitioned from an avid supporter to a dedicated board member, and since then has played every role but lighting and sound! Beyond FOG, Vanessa serves on multiple boards and advisory committees. She is particularly celebrated for her significant contributions to Mid-South Pride, where her efforts have made a lasting impact. Vanessa's commitment to fostering inclusivity and community spirit showcases her dedication to making a difference.

**It's time for YOU
to become a monthly supporter of
Friends of George's**

Scan here to Become a Member

Sara Jane & Frank Goodman, monthly supporters



901-818-0773

www.pavosalon.com

374 S Grove Park Rd. Memphis, TN 38117

2157 Central Ave. Memphis, TN 38104





1910 Madison Ave.

(901) 725-9173

mailcentermemphis.com

Ship



Pack



Mail



Copy



Print



Drop-Off



ALL CARRIERS





FOCUS
SUPPORTS
OUR
COMMUNITY

SUPPORT QUEER MEDIA



1 YEAR
SUBSCRIPTION
Starting at \$**35**



Read Us Online!
focuslgbt.com



Utopia proudly supports
Friends of George's
and Dragnificent



Utopia Animal Hospital
1157 Madison Ave
901-746-8758
UtopiaAnimalHospital.com



SCAN ME

colorSTREET

Sparkling Garden

Spring 2025

Experience a seasonal spring assortment filled with limitless sparkle, pretty pink and purple pastels, and whimsical floral prints you'll adore.



Iris-istible

glitter

\$13 USD / \$17.50 CAD /
€13 Net*



Spring to Life

glitter design

\$14 USD / \$18.75 CAD /
€14 Net*



Moonstone Meadow

glitter design

\$14 USD / \$18.75 CAD /
€14 Net*



Sweet Tulip

shimmer

\$13 USD / \$17.50 CAD /
€13 Net*



Wisteria Wonder

glitter

\$13 USD / \$17.50 CAD /
€13 Net*



Orchid Glow

glitter

\$13 USD / \$17.50 CAD /
€13 Net*



Pastel Petals

shimmer design

\$14 USD / \$18.75 CAD /
€14 Net*



Poppy Picnic

creme

\$13 USD / \$17.50 CAD /
€13 Net*



Wildflower Wishes

glitter design

\$14 USD / \$18.75 CAD /
€14 Net*



Morning Glow

shimmer

\$13 USD / \$17.50 CAD /
€13 Net*

Collection launches at 10:30 AM CT / 17:30 CET on February 21, 2025, and is available through 11:59 PM CT / 18:59 CET on May 21, 2025 or while supplies last. Eligible for purchase with Product Credit, Host Rewards, and Gift Cards. Eligible for purchase through a Beauty Social. *VAT varies by country. Final pricing may vary depending on the VAT applicable to the shipping address.

Thank You for Joining Us!

On behalf of everyone at Friends of George's, thank you for being part of *Dragged Thru Time*! Your presence in the audience means the world to us. Every laugh, cheer, and applause fuels our passion and reminds us why we do what we do.

This original production was a labor of love from our incredible cast, crew, and creative team—mostly volunteers who pour their hearts into bringing drag theatre to life. We're proud to celebrate LGBTQ+ stories, history, and artistry in a way that entertains, empowers, and honors those who paved the way.

Your support keeps this glittery time machine rolling. Whether this is your first show or your fifteenth, thank you for being part of our journey. We can't wait to see you again at the next adventure!

With love and gratitude,
Friends of George's





Memphis
Brooks
Museum
of Art

Pride Collective

at Memphis' art museum

A membership community that
champions Queer voices in the arts.

**Celebrate art. Celebrate
identity. Celebrate Pride.
Join today.**



BACK TO CHOICES



*because
healthcare
shouldn't
be a drag*



CHOICES.
Center for Reproductive Health